

clinell[®]

www.clinell.com.au

EFFECTIVE
AGAINST
COVID-19



Universal Spray

Clean and disinfect in one easy step

- ✓ Multipurpose cleaning and disinfecting solution
- ✓ Kills at least 99.99% of germs
- ✓ Hospital Grade Disinfectant
- ✓ Suitable for use on hard surfaces

Suitable for cleaning and disinfecting surfaces and equipment, killing at least 99.99% of germs, including Coronavirus.

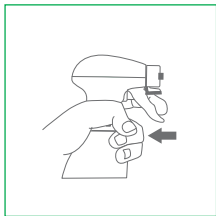


Clinell Universal Spray is a combined cleaning and disinfectant spray, suitable for use on surfaces, killing at least 99.99% of germs, including Coronavirus.

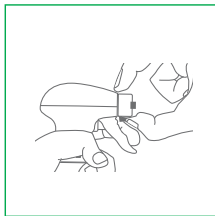
The spray is perfect for using on surfaces and equipment that are frequently used including table tops, door handles, light switches, hand rails, office spaces, bathrooms and vehicles.

- ✓ Multipurpose cleaning and disinfecting solution
- ✓ Kills at least 99.99% of germs
- ✓ Effective against Coronavirus in 30 seconds
- ✓ Effective against VRE and MRSA in 60 seconds
- ✓ Suitable for use on hard surfaces, including visibly dirty surfaces
- ✓ Dermatologically tested
- ✓ Perfect for cleaning work stations
- ✓ Can be used on baths, sinks and toilet seats
- ✓ No bleach
- ✓ Hospital Grade Disinfectant

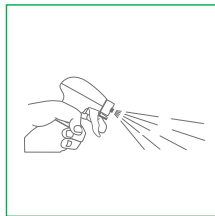
Instructions for use:



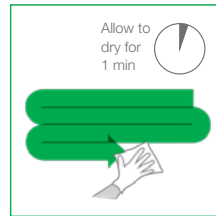
To open, pull trigger slightly.



Whilst pulling the trigger, pinch and turn the nozzle.



Spray evenly on to the surface.



Wipe surface clean in S shape pattern, ensuring it stays wet for 1 minute.

Where to use:
This is not an exhaustive list.



DOOR HANDLES



LIGHT SWITCHES



TABLE TOPS



HAND RAILS



WHEN UNWELL



SPILLS



BATHROOMS



VEHICLES

PRODUCT	QUANTITY	PRODUCT CODE
Universal Spray 500	Single Unit (500ml)	CLDCDS500AUS



Team Medical Supplies
Phone 1300 22 44 50
Fax 1300 22 44 60
info@teammed.com.au
www.teammed.com.au

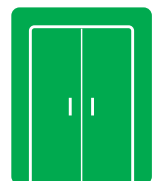


YOUR WA LOCAL SUPPLIER

BP Medical (WA)
Phone 1300 33 55 60
Fax 1300 33 55 70
info@bpmedical.com.au
www.bpmedical.com.au



CHAIRS



CUPBOARD HANDLES

Use disinfectants safely. Always read the label and product information before use.

GHA210137